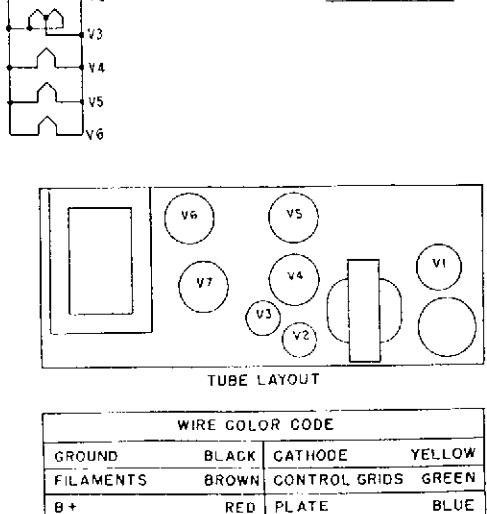
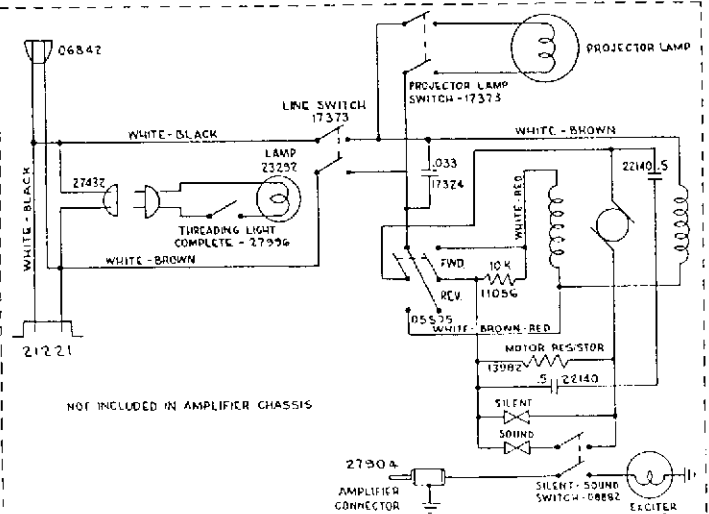
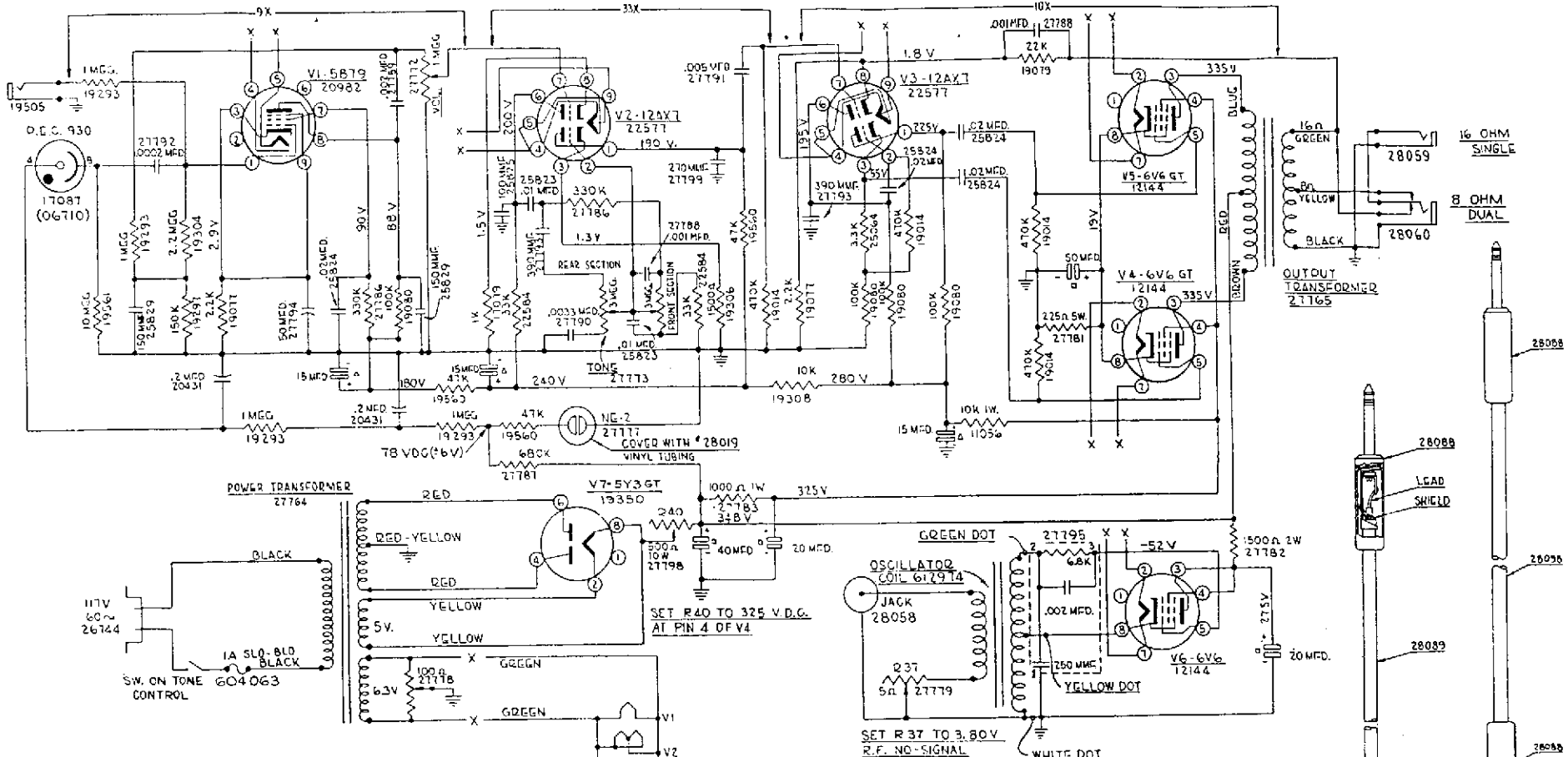
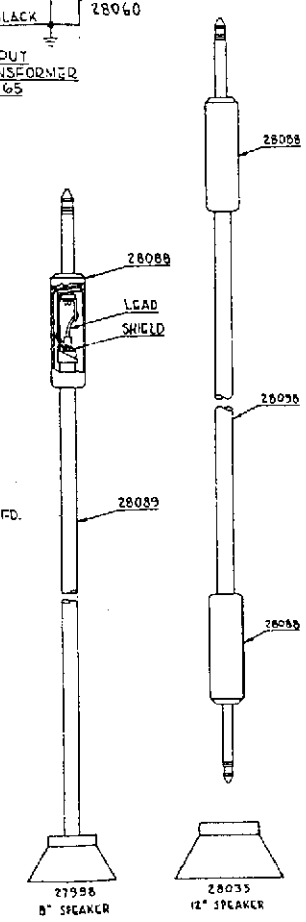


# M-1

STAGE GAINS



NOTE:  
 ALL RESISTORS 1/2 WATT UNLESS OTHERWISE SPECIFIED.  
 Δ - INDICATES CAPACITORS IN SAME CAN 27775.  
 □ - INDICATES CAPACITORS IN SAME CAN 17776.  
 D.C. REFERENCE VOLTAGES MEASURED WITH A V.T. VM FROM SOURCE TO GROUND AFTER SETTING R37 & R40 UNDER FOLLOWING CONDITIONS:  
 LINE VOLTAGE 117 V.A.C. 60~  
 VOLUME CONTROL - MAX.  
 TONE CONTROL - NORMAL  
 OUTPUT LOAD - 16 OHM  
 OSCILLATOR LOAD - 5 OHM N.I.  
 INPUT - NO SIGNAL  
 GAIN MEASUREMENTS - 1 KC.



60 CYCLES  
 Bell & Howell Co. Chicago U.S.A.  
 15 W. AMPLIFIER WIRING DIAGRAM  
 FOR DESIGNS 385 (08855)  
 DATE 11-10-51 SERVICE DRAWN 402

B+H  
 385  
 399